



TJM Outback bars employ either a four or five-fold channel/wing design. Folds are deliberately spaced across the channel for maximum strength and stylish looks. The upswept tapered wing provides excellent approach angle for accessibility.



Recessed fog lights come standard along with recessed polycarbonate indicator & park lights.



TJM's bull bar uprights feature a single piece of steel, which extends from the upright down through the bumper channel to the chassis mount, maximising strength. 40mm cato straps soften the edges of and add to the aesthetics.



TJM bull bars provide secure, strong and stable mounting points to fit a large array of driving lights. The strength of the TJM product ensures against excessive movement which can result in a vibrating beam pattern, bulb failure or light body fatigue.



TJM's channel designs allow maximum airflow to the vehicle's radiator. This vent, as well as the viewing hole on the top of the channel, also allows easy access to the vehicle's winch controls.



Vehicle mounted aerals are often essential when travelling in remote locations. TJM bull bars feature two heavy duty aerial tabs located behind the top cross tube.



TJM's mounting system is specifically engineered for each vehicle. The design spreads impact and winching loads evenly across the vehicle's chassis. Which ensures the bull bar is strong for extreme conditions and functions properly in the event of an impact.



The engineered winch frame mount accommodates a variety of winches and does not interfere with the vehicle's air bag triggering system. The bar is designed and tested to endure the heavy stresses of winching.



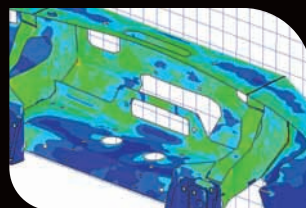
TJM pioneered the universally supported, reinforced T-slot design which allows a recovery jack to be mounted directly onto the bull bar.



Many TJM bull bars come as standard with an integrated underbody guard, for additional underbody protection. Front, sump & transmission guards are also available separately.



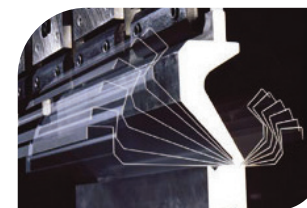
Cutting your original bumper to fit a bar is no longer always the case. TJM headlight trims allow seamless bull bar integration with a finish un-matched by any other manufacturer.



There are countless hours of engineering and testing to ensure that a TJM bar does not effect the vehicle's air bag triggering system.



TJM manufacturing facilities employ laser cutters for fraction of a millimetre precision.



Flat pieces of steel profiles are folded using CNC brake presses which ensure accuracy and consistency. These folded profiles make up sections of a TJM bull bar.



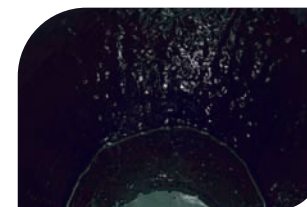
Plasma cutters are used for repetitive design features that require speed and precision.



CNC mandrel benders are used to bend tubes to ensure smooth curves and even wall thickness.



Each TJM bull bar is assembled then welded and undergoes rigorous quality testing.



TJM steel bull bars are shot blasted, powder coated and oven baked creating a durable finish. The powder coat is an excellent base for colour coding if required.

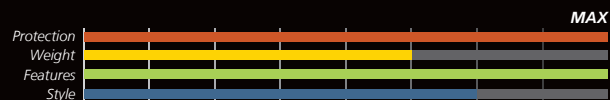


TJM take extra care in the packaging and handling of our products to ensure they arrive to our consumers exactly as desired.



Finished goods are stored at the TJM warehouse in Brisbane, Australia, where they are distributed out to multiple locations throughout the world.

The most popular design of our frontal protection range is undoubtedly the TJM T13 Outback bar.



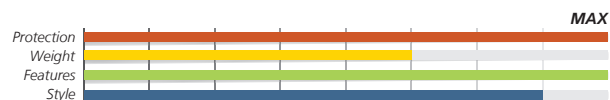
Our engineers spend countless hours perfecting the design of these bars to ensure our customers are equipped with one of the finest products in the market. In a recent issue of 4WD Action, our T13 Outback bar for the Hilux was stringently tested among competitor products, with our bar taking the coveted title 'Best Bull Bar'. Packed full of features and benefits, if you're after a stylish bar with optimum performance - you can't go past the TJM T13 Outback bar.

- › Designed for improved approach angles
- › Full cato straps, uniquely styled to the vehicle for incredible strength and damage deflection
- › 50mm^Ø pipework
- › Integrated fog lights (fog lights, wiring harness & switches included)
- › Flush mounted polycarbonate indicator lenses
- › Reinforced T-slot recovery jack points (suits a wide range of recovery jacks including the TJM recovery jack)
- › Low profile winch mount
- › Winch frame holds a wide range of recovery winches (Up to 12,000lb)
- › Accommodates large driving lights (Up to Britax Xray Vision 220 & 220c)
- › Provision for fitment of dual aerals
- › Air bag compatible and ADR compliant
- › Does not void your new vehicle warranty

Certain TJM T13 Outback bull bars may not incorporate all of the above features.



The TJM T15 steel deluxe bull bar is one of our premium products available in our frontal protection range.



The T15 shape is signified by a strong centre loop, accompanied by two refined side loops protecting the headlights. The steel deluxe variant equips the bar with integrated fog and indicator lights, winch compatibility and allows for significant improvements in approach angles. The thick steel tubing provides first-class protection whilst the comprehensive engineering features enable the bar to be air bag compatible and ADR compliant.

- › Designed for improved approach angles
- › 76mm^Ø centre tube 50-63mm^Ø outer tubes
- › Integrated fog lights (fog lights, wiring harness & switches included)
- › Flush mounted polycarbonate indicator lenses
- › Reinforced T-slot recovery jack points (suits a wide range of recovery jacks including the TJM recovery jack)
- › Low profile winch mount
- › Winch frame holds a wide range of recovery winches (Up to 12,000lb)
- › Accommodates large driving lights (Up to Britax Xray Vision 220 & 220c)
- › Provision for fitment of dual aerials
- › Air bag compatible and ADR compliant
- › Does not void your new vehicle warranty

Certain TJM T15 steel deluxe bull bars may not incorporate all of the above features.





If you're after a tough bar that is strong, safe and durable, but at great value, a TJM fleet bar is the answer.



Built with the same precision engineering technology as its deluxe or outback variant, the steel fleet bar provides uncompromised protection, without the extra channel folds and built in fog lights which can be deemed unnecessary in the working environment. Equipped with dual heavy duty aerial mounts, reinforced recovery points, winch provision and air bag compatibility the TJM fleet bar is clearly tough enough for any job.

- › Designed for improved approach angles
- › Combination of T13 & T15 designs available
- › Flush mounted polycarbonate indicator lenses
- › Reinforced T-slot recovery jack points (suits a wide range of recovery jacks including the TJM recovery jack)
- › Low profile winch mount
- › Winch frame holds a wide range of recovery winches (Up to 12,000lb)
- › Accommodates large driving lights (Up to Britax Xray Vision 220 & 220c)
- › Provision for fitment of dual aerals
- › Air bag compatible and ADR compliant
- › Does not void your new vehicle warranty



Certain TJM fleet bull bars may not incorporate all of the above features.



TJM alloy deluxe bars employ either a four or five-fold channel/wing design. Folds are deliberately spaced across the channel for maximum strength and stylish looks. The upswept tapered wing provides excellent approach angle for accessibility.



Recessed fog lights come standard along with recessed polycarbonate indicator & park lights.



TJM alloy deluxe bars are signified by a strong centre loop, accompanied by two refined side loops protecting the headlights.



TJM bull bars provide secure, strong and stable mounting points to fit a large array of driving lights. The strength of the TJM product ensures against excessive movement which can result in a vibrating beam pattern, bulb failure or light body fatigue.



TJM's channel designs allow maximum airflow to the vehicle's radiator. This vent, as well as the viewing hole on the top of the channel, also allows easy access to the vehicle's winch controls.



Vehicle mounted aerals are often essential when travelling in remote locations. TJM alloy bull bars feature heavy duty aerial tabs located adjacent to the centre loop.



TJM's mounting system is specifically engineered for each vehicle. The design spreads impact and winching loads evenly across the vehicle's chassis. Which ensures the bull bar is strong for extreme conditions and functions properly in the event of an impact.



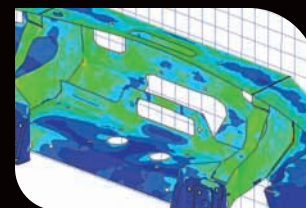
The engineered winch frame mount accommodates a variety of winches and does not interfere with the vehicle's air bag triggering system. The bar is designed and tested to endure the heavy stresses of winching.



Many TJM bull bars come as standard with an integrated underbody guard, for additional underbody protection. Front, sump & transmission guards are also available separately.



Cutting your original bumper to fit a bar is no longer always the case. TJM headlight trims allow seamless bull bar integration with a finish un-matched by any other manufacturer.



There are countless hours of engineering and testing to ensure that a TJM bar does not effect the vehicle's air bag triggering system.

Why TJM Alloy?

TJM realise a steel bull bar might not be for everyone, which is why we have spent countless hours designing a top performing and good looking alternative - the TJM alloy deluxe bull bar. Not only will it protect you from an animal strike, you'll instantly feel a million dollars with one of these in your possession, let alone after it has been fitted to the front of your 4WD!

Alloy bars are a lightweight alternative to steel variants, contrary to popular belief the modern alloy bar is very strong. TJM alloy deluxe bull bars are all carefully engineered in Australia using the latest 3D modelling and design technology. This ensures the bar is engineered to suit the shape of the vehicle. All TJM alloy bars are seam welded providing maximum strength and durability.

Every TJM alloy bull bar complies with Australian design rules and are air bag compatible, ensuring optimum safety standards are met.

From rugged terrains of the outback, to coastal adventures and alpine treks the TJM alloy deluxe bar will get you there and back again and again. Its aluminium properties, which are naturally corrosive resistant, gives it the ability to withstand our harsh climate with the TJM alloy deluxe bull bar you can enjoy the best of both worlds.

An investment in the TJM alloy deluxe bull bar will be one of great value and satisfaction

Whatever your reason may be, you can't go past a TJM alloy deluxe bull bar.

The TJM T15 alloy deluxe bull bar is the premium product available in our aluminium frontal protection range.



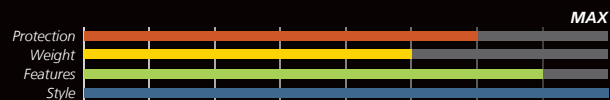
The T15 alloy deluxe bull bar shape is signified by a strong centre loop, accompanied by two refined side loops protecting the headlights. This bar is light weight, strong and looks the part too. Adding guaranteed class to your four wheel drive, the T15 alloy deluxe is sure to make others green with envy.

- › Designed for improved approach angles
- › 76mm^Ø centre tube 50-63mm^Ø outer tubes
- › Integrated fog lights (fog lights, wiring harness & switches included)
- › Flush mounted polycarbonate indicator lenses
- › Low profile winch mount
- › Winch frame holds a wide range of recovery winches (Up to 12,000lb)
- › Accommodates large driving lights (Up to Britax Xray Vision 220 & 220c)
- › Provision for fitment of dual aerials
- › Air bag compatible and ADR compliant
- › Does not void your new vehicle warranty

Certain TJM T15 alloy deluxe bull bars may not incorporate all of the above features.



One of the best looking bars on the market is without a doubt the TJM T3 bull bar.



Fitted with a strong steel channel and a single polished alloy or steel loop over the grille, these bars convey multiple benefits. Where the steel channel enables strong frontal protection, the single loop provides upper grille protection. This style adds a smart finish to any vehicle as well as ensuring peace of mind for the safety of the vehicle and its occupants in the event of an animal strike.

- › Designed for improved approach angles
- › Polished alloy or steel centre tube
- › ‘Swept’ styled centre tube to match contours of the grille
- › Integrated fog lights (fog lights, wiring harness & switches included)
- › Flush mounted/integrated polycarbonate indicator lenses
- › Reinforced T-slot recovery jack points (suits a wide range of recovery jacks including the TJM recovery jack)
- › Low profile winch mount
- › Winch frame holds a wide range of recovery winches (Up to 12,000lb)
- › Accommodates large driving lights (Up to Britax Xray Vision 220 & 220c)
- › Air bag compatible and ADR compliant
- › Does not void your new vehicle warranty

Certain TJM T3 bull bars may not incorporate all of the above features.



TJM manufactures a variety of high and low loop polished alloy nudge bars for a range of makes and models



At TJM we realise that bull bars aren't for everyone, which is why we provide our customers the opportunity to select from our quality range of nudge bars. They are a great solution for protection from minor bumps and scrapes as well as adding value to your vehicle. As with all our frontal protection, they are individually designed to suit the shape of the corresponding vehicle. Our T16 nudge bars are available in either high loop or low loop variants. Each style is made from high grade polished aluminium with driving light provisions as standard.

- › High grade aluminium
- › 63.5mm^ø highly polished tube
- › Driving light mounts (Up to Britax Xray Vision 220 & 220c)
- › Unique protective plate designed to enhance the vehicle's natural styling
- › Air bag compatible and ADR compliant
- › Does not void your new vehicle warranty
- › Adds value to the vehicle



Certain TJM high & low loop nudge bars may not incorporate all of the above features.

In the strongest way possible TJM modular side bars & steps protect your vehicle's wheel arches, sills and lower panels from rocks and road debris.

TJM modular side bars & steps offer excellent wheel arch, flare, sill and panel protection but the unique feature of these modular side bars and steps is if you choose, you can install just the side steps and then fit the side bar kit at a later date. This unique design is only available through TJM.

- › Large 50-73mm^Ø tubing
- › Engineered heavy duty mounting system, newer vehicles feature 4 mounting points rather than the traditional three, making them the strongest in the market
- › Provides unrivalled wheel arch, flare, sill & panel protection
- › Durable, light weight checker plate steps provide easy access to and from the cab, as well as added side protection



Above shows the unique knock-out plate and tubing section which can be upgraded easily to the complete side bars & steps package.



The TJM modular side steps without the side bar kit.



The complete TJM modular side bars & steps package



TJM's RB6 rear step bar provides solid protection for the rear of your vehicle.

It's when approaching and departing rises in the terrain that the rear of your vehicle is susceptible to heavy bumps and damage. To offer the best possible protection to counter this, TJM's RB6 rear step bar is manufactured from strong 50-63mm^Ø steel tube and chassis mounted for strength, providing your vehicle's rear panels with solid protection.

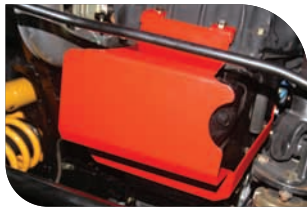
- › 50-63mm^Ø pipework
- › Excellent rear protection
- › Durable and light weight checker plate steps provide easy access to the rear of the vehicle
- › Reinforced T-slot recovery jack points (Suits a wide range of recovery jacks including the TJM recovery jack)
- › ADR62 certified, class 4 heavy duty towbar
- › Rated to vehicle towing capacity
- › Does not void your new vehicle warranty



TJM offer the most durable underbody protection on the market that's carefully engineered and press folded for absolute maximum strength.

To protect the most vulnerable components underneath the vehicle TJM underbody guards are constructed from 3mm thick steel sheet and incorporates strategic folds for incredible strength. They are electro coated black for corrosion resistance of up to 500 hours. The advantages of electro coating is that it gets into all the nooks and crannies and is much more resilient to chipping when knocked around, unlike powder-coated varieties.

- › 3mm thick steel
- › Provides excellent underbody protection
- › Electro coated black for up to 500 hours of corrosion resistance
- › Press folded in strategic areas for absolute maximum strength
- › Front underbody, sump and transmission guards available
- › Drain access holes for sump and transmission where necessary



TJM underbody guards

Although the underbody components of your vehicle may be classed as 'out of sight, out of mind', they certainly cannot be overlooked when heading off road. A simple collision with a tree stump or rock could cause significant (and expensive) damage to the steering, engine sump or transmission. Investing in a TJM underbody guard may be the difference between getting your vehicle home undamaged, or lying busted out on the track.

Having designed quality underbody guards for over 15 years, TJM certainly knows what's best. All our underbody guards are made from 3mm steel and finished with superior electro coating for ultimate performance and durability. Specially designed, pressed and folded to supply the optimum strength and protection, you can be sure the TJM Front Underbody Guard, Transmission Guard and Sump Guard range will take the brunt of any hazard, ensuring the vital components of your vehicle are out of the firing line.



TJM UNDERBODY PROTECTION